

**COMPOUND GAUGE**

15-1-253000 2½" ¼" 30-30 Compound Gauge



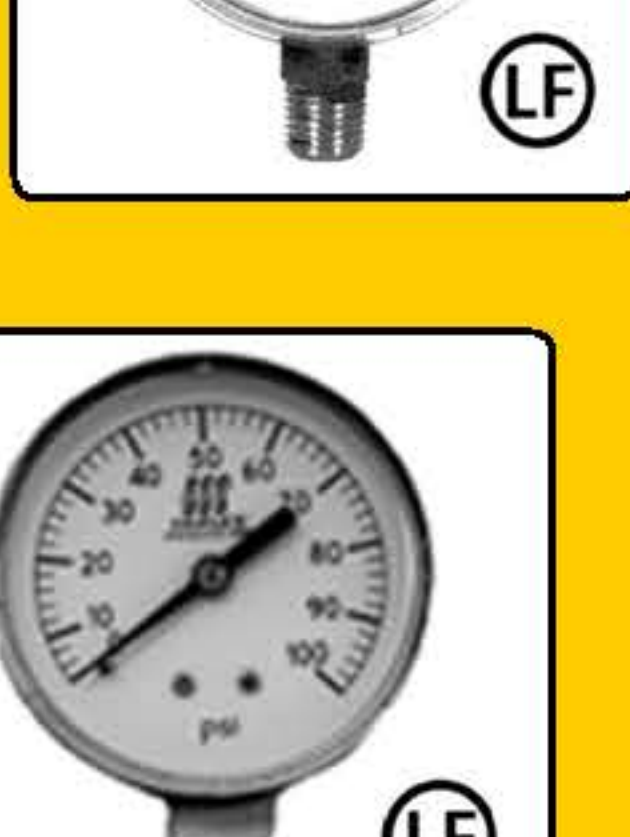
**WATER TEST GAUGE**

15-02200 2½" 200# Water Test Gauge  
 15-02300 2½" 300# Water Test Gauge  
 15-02005 Test gauge swivel adapter  
 15-025200 2½" 200# Liquid Filled Water Test Gauge  
 15-025300 2½" 300# Liquid Filled Water Test Gauge  
 15-028300 2½" 300# Water Test Gauge with maximum indicating pointer



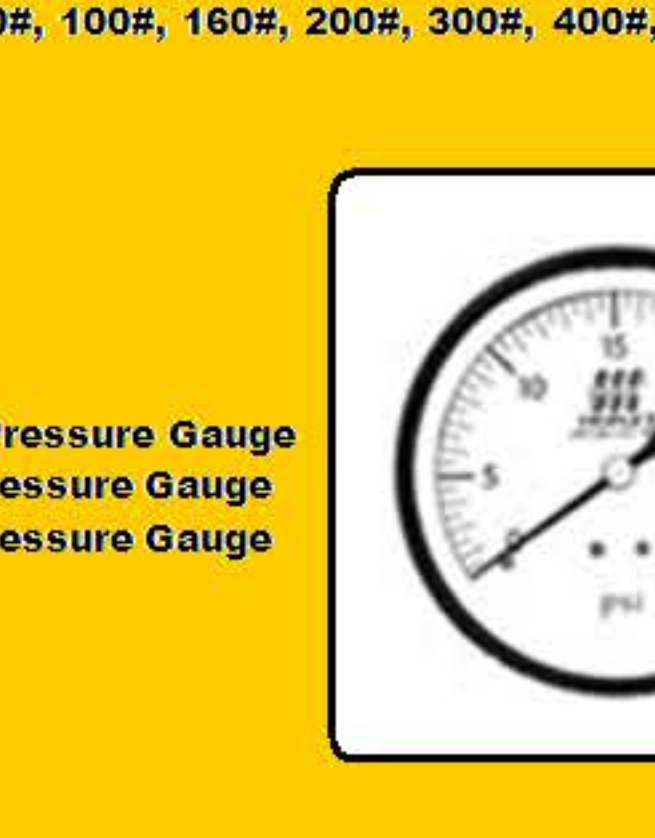
**VACUUM GAUGE**

15-3-151030 1½" 1/8" Vacuum Gauge  
 15-3-201030 2" 1/8" Vacuum Gauge  
 15-3-203030 2" ¼" Vacuum Gauge  
 15-3-253030 2½" ¼" Vacuum Gauge



**PRESSURE GAUGE**

15-4-201---- 2" 1/8" ---- Gauge  
 15-4-203---- 2" ¼" ---- Gauge  
 15-4-253---- 2½" ¼" ---- Gauge  
 15-4-353---- 3½" ¼" ---- Gauge  
 15-4-403---- 4" ¼" ---- Gauge

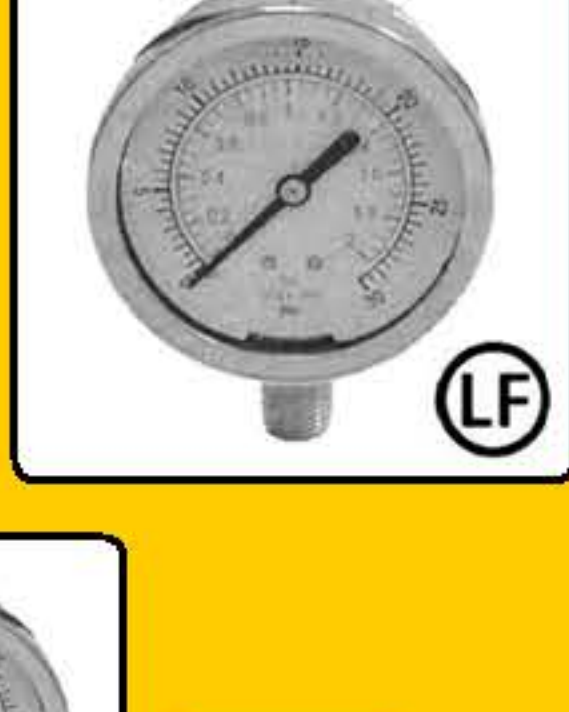


Specify desired pressure 15#, 30#, 60#, 100#, 160#, 200#, 300#, 400#, 600

**LIQUID FILLED PRESSURE GAUGE**

for use where gauge is exposed to corrosion vibration, pulsation or metal fatigue-such as pumps, compressors, hydraulic equipment and machine tools.

15-15-253060 2½" ¼" 60# Liquid Filled Gauge  
 15-15-253100 2½" ¼" 100# Liquid Filled Gauge  
 15-15-253200 2½" ¼" 200# Liquid Filled Gauge  
 15-15-253300 2½" ¼" 300# Liquid Filled Gauge  
 15-15-253400 2½" ¼" 400# Liquid Filled Gauge  
 15-15-253600 2½" ¼" 600# Liquid Filled Gauge



**LIQUID FILLED VACUUM GAUGE**

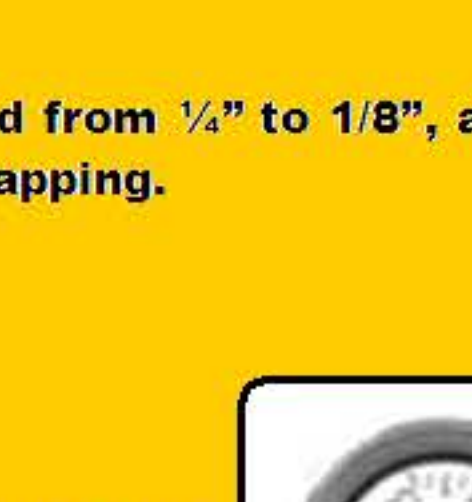
15-17-253030 2½" ¼" 30" Vacuum Gauge



**PRESSURE SNUBBERS**

Used where sudden pressure changes or vibrations are noticeable-extends gauge life - Bronze body and core - 1000 psi. maximum

15-21005 ½" NPT for air or gas  
 15-21010 ½" NPT for oil, steam or water



**GAUGE REDUCING ADAPTER**

Reduces the standard gauge thread from ¼" to 1/8", allowing most standard gauges to fit into a 1/8" tapping.

15-312513



**TRIDICATORS**

**COMBINATION TEMPERATURE AND PRESSURE**

15-06000 3½" ¼" Straight Tridicator  
 15-07000 3½" ¼" Back Outlet Tridicator



**TRIDICATORS**

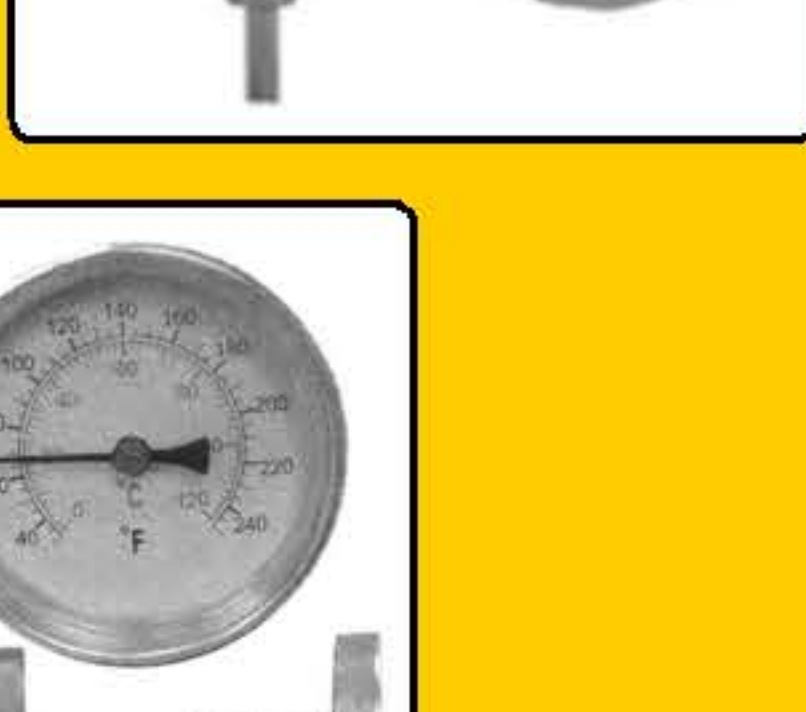
**COMBINATION TEMPERATURE AND PRESSURE**

15-07090 2½" ¼" CBO Tridicator - .090" Well  
 15-07200 2½" ¼" CBO Tridicator - 2.00" Well  
 15-07000 3½" ¼" Back Outlet Tridicator  
 15-070002 4" ½" Back Outlet 200psi 70°-320°



**DIAL THERMOMETERS**

15-08000 3½" ¼" Straight Dial Thermometer  
 15-09000 3½" ¼" Angle Dial Thermometer



**DIAL THERMOMETERS - "POP IN"**

**REMOVEABLE BRASS WELL**

15-14050 2½" ¼" IPS CBO Thermometer  
 15-14088 2½" ¼" CC CBO Thermometer



**HOT WATER THERMOMETERS**

15-11000 Straight Hot Water Thermometer-Iron Well  
 15-11500 Straight Hot Water Thermometer-Brass Well  
 15-12000 Angle Hot Water Thermometer-Iron Well  
 15-12500 Angle Hot Water Thermometer-Brass Well



**ADJUSTABLE WELL HOT WATER THERMOMETERS**

15-16000 Adjustable Well Hot Water Thermometer,-Brass Well  
 15-16050 Adjustable Well only



**POCKET THERMOMETER**

1" magnifying dial face - stainless steel stem

15-20160 -40° to +160°  
 15-20200 0° to + 200°



**STRAP ON SURFACE THERMOMETER**

Range from 0/250°F  
 2" Black Steel Case  
 ±2.5%  
 Single spring mounting

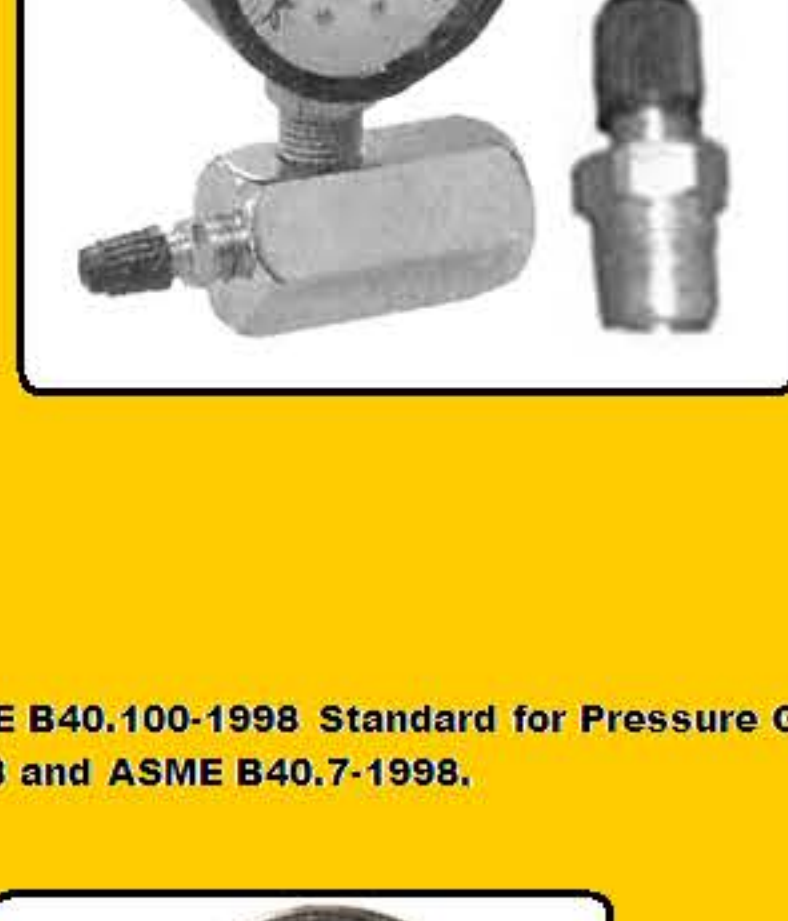
15-29200



**ECONO GAS TEST GAUGE ASSEMBLY**

Adapts 3/4" MIP - 2" Gauge - Steel case - Brass Air Valve - ¼" FIP plated body - Individually boxed

15-19015 15 psi  
 15-19030 30 psi  
 15-19060 60 psi  
 15-19001 Gas test body only ¾" x ¼" x 1/8"  
 15-19003 Air valve and cap 1/8"



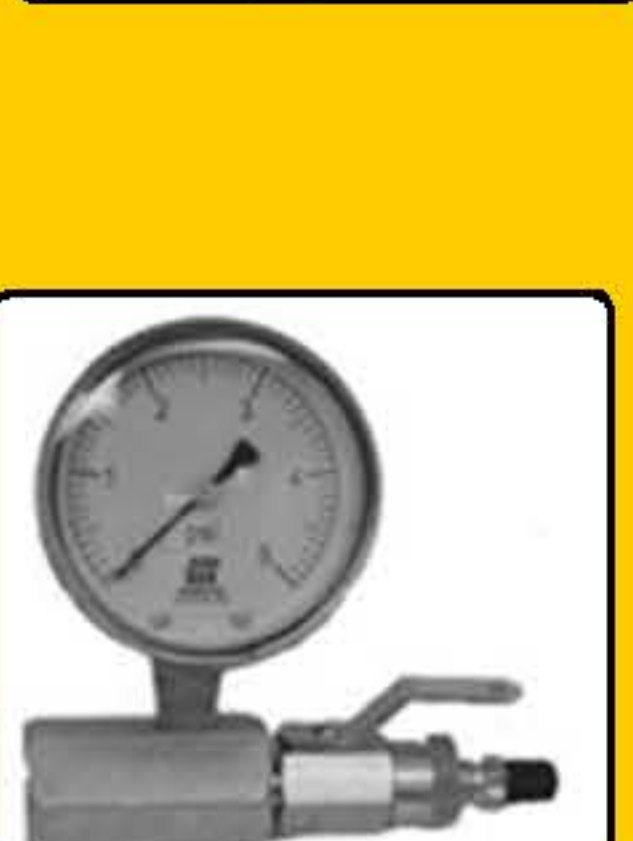
**LOW PRESSURE**

**GAS TEST GAUGES AND KITS**

Triple "S" gauges are manufactured in accordance with ASME B40.100-1998 Standard for Pressure Gauges and Gauge attachments, which incorporate ASME B40.1-1998 and ASME B40.7-1998.

Triple "S" Low Pressure Diaphragm Gauges are:

- 2½" diameter
- Easy read black on white face
- Units of "psi" appears on the face of the gauge
- Calibrated in increments of 1/10th of a pound
- Includes an effective stop for the advancing needle at the zero point
- Each gauge includes a calibration screw
- Diaphragm gauges are extremely sensitive and over pressurizing will cause damage not covered by the manufacturer's warranty.



**LOW PRESSURE DIAPHRAGM GAUGE**

15-24-253005 2½" ¼" 5# Low Pres Diaphragm Gauge  
 15-24-253007 2½" ¼" 7# Low Pres Diaphragm Gauge  
 15-24-253010 2½" ¼" 10# Low Pres Diaphragm Gauge



**LOW PRESSURE GAS TEST KIT**

Gas Test Kits contain:  
 Diaphragm gauge, body, snifter valve, domestic air cock

15-25-253005 2½" ¼" 5#  
 15-25-253007 2½" ¼" 7#  
 15-25-253010 2½" ¼" 10#

**MASTER PLUMBERS' GAS TEST KIT**

Master Plumbers' Gas Test Kit contain:  
 Diaphragm gauge, body, snifter valve, domestic air cock, large bulb and hose, impact resistant box.

15-27-253005 2½" ¼" 5#  
 15-27-253007 2½" ¼" 7#  
 15-27-253010 2½" ¼" 10#  
 15-19001 Gas test body only ¾" x ¼" x 1/8"  
 15-19005 Bulb Pump - Hose - Adapter



**PROFESSIONAL GAS TEST KIT**

15-34-253005 5# Gauge with kit  
 15-34-253010 10# Gauge with kit

Each gas test kit contains:

15-24-253005 2½" ¼" 5# Diaphragm Gauge  
 or  
 15-24-253010 2½" ¼" 10# Diaphragm Gauge

15-19001 ¾" x ¼" x ¼" Body  
 16-09025 ¾" M x F Mini Ball Valve  
 28-09009 Hand Pump



**VACUUM VIEW SUCTION LINE ANALYZER**

- Thick, clear collapse, resistant vinyl tubing
- All brass and copper fittings
- Fits popular 3/8" and 1/2" suction line fittings
- Vacuum gauge range 0 - 30" Hg
- Rugged carrying case

15-30203



**QUICK CONNECT LINE PRESSURE TEST**

Fits Copper, CPVC or PEX Pipe

- Pressure test line for leaks
- Kit comes with quick connect fittings
- Fits ½" and ¾"
- Includes:

Quick connect male adapters, end stops, release tools, gauge, bushing, body, snifter valve

15-3225100 100# Pressure gauge  
 15-3225200 200# Pressure gauge



**WATER TEST GAUGE**

15-02200 2½" 200# Water Test Gauge  
 15-02300 2½" 300# Water Test Gauge  
 15-02005 Test gauge swivel adapter  
 15-025200 2½" 200# Liquid Filled Water Test Gauge  
 15-025300 2½" 300# Liquid Filled Water Test Gauge  
 15-028300 2½" 300# Water Test Gauge with maximum indicating pointer



**SPRINKLER GAUGE**

#15-4-353300UL

- UL listed / FM Approved pressure gauges designed for use in the fire protection/sprinkler market.
- Suitable for air, water, oil, gas or any other media not corrosive to brass.

Dial size: 3½" Connection: ¼"NPT  
 Pressure: 300#  
 General Specifications:  
 Black Plastic Case + Screw-on Molded Plastic Lens & Bezel +  
 Brass Socket and Movement + Phosphor Bronze Bourdon Tube  
 Dry Non-Fillable + 3-2-3% Accuracy +  
 Ambient Temperature: -50° to 160°F

